

MAKE LAST-MILE DELIVERY FULLY AUTONOMOUS
EMPOWER LOGISTICS WITH BOUNDLESS FREEDOM



400-888-5107

📍 Industry-City Integration
Demonstration Zone, Huagang Town,
Hefei City, Anhui Province, China

✉ info@eforkrobot.com

🌐 www.eforkrobot.com



WeChat Official Account



WeChat Video Account



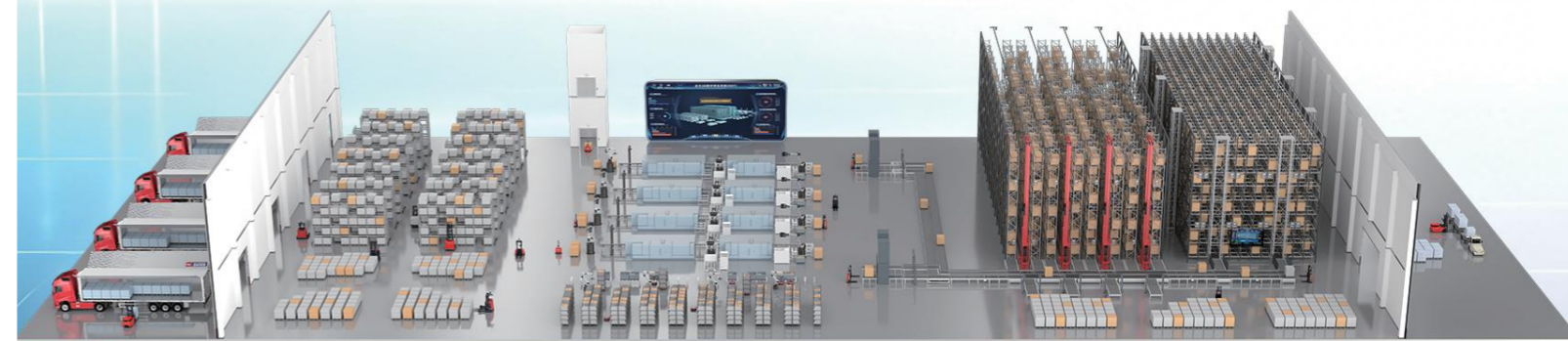
TikTok Account

HELI



Full-Scenario Intelligent Logistics

Full-Stack Solution Service Provider



Anhui Heli Yufeng Intelligent Technology Co., Ltd.

CONTENTS

Company Introduction 01

Development History 05

Business Layout 07

Intelligent Product 11

Intelligent Solution 13

Intelligent System 14

Intelligent Platform 19

Intelligent Service 21

Value Advantage 23

Collaboration Cases 25

Cooperative Clients 41



COMPANY INTRODUCTION

Anhui HELI was founded in 1958 and listed on the Main Board in 1996. The company's main business covers four segments: complete machine, intelligent logistics, components and after-market. The company has 9 major global complete machine manufacturing bases, nearly 400,000 units in annual sales, 28 provincial marketing companies in China and more than 1,000 marketing service agencies worldwide. Its products are sold in over 180 countries and regions. HELI is currently the leading enterprise in China's industrial vehicle industry, possessing the largest scale, the most complete industrial chain and the strongest comprehensive strength.

HELI YUFENG has structured four major business segments which are intelligent warehousing, intelligent handling, intelligent factory and intelligent park. Based on seven decades of HELI's advanced technological accumulation, HELI YUFENG builds hardware product matrices of intelligent warehouse robots and intelligent mobile robots, while independently developing software product atlas including intelligent integration system and HELI digital twin platform. Together with over 1,000 global marketing service organizations of HELI, HELI YUFENG provides customers with full-stack solutions comprehensive services for full-cycle intelligent logistics, including project consulting, solution planning, product R&D, implementation and delivery as well as after-sales O&M. It has successfully implemented a number of national-level benchmark demonstration projects in China's pillar and emerging industries, such as new energy, food & cold chain, chemicals, auto parts, metallurgy, new materials, and military industry. HELI YUFENG is committed to bringing AI logistics robots into thousands of companies, empowering every industry.

China's Leading, World-Class Excellence



60+

Over 60 Years of Logistics Expertise



9+

9 Major Global Complete Machine Manufacturing Bases



28+

28 Provincial Marketing Centers
Over 700 Marketing Service Organizations in China



400+

Overseas Marketing & Service Organization

HELI

HELI 智能物流产业园
HELI INTELLIGENT LOGISTICS INDUSTRIAL PARK

/ Honor /

National-level Specialized, Sophisticated Distinctive and Innovative "Little Giant" Enterprise	National High-Tech Enterprise	Sci-Tech Reform Demonstration Enterprise by the SASAC
Key Project Supported by Development Fund	2023-2025 First (Set) Major Technical Equipment Certification	National Intellectual Property Advantage Enterprise
Provincial Postdoctoral Research Workstation	Co-editor of the "Blue Book on the Development of the Forklift Mobile Robot Industry"	Co-editor of the Technical Specification for Unmanned Forklifts / Data Interface Specification for Dispatching Systems
Co-editor of the Specification for Explosion-Proof Forklifts / Specification for Robot Modules	Recommended Brand for Intelligent Warehousing Equipment and Technology	Top 10 Promoter of New Quality Productive Forces Application
Excellent Recommended Brand for Intelligent Logistics	AGV Innovative Application Award and Benchmark Case Award	Gaogong Golden Globe Award

/ R&D and Manufacturing Capabilities /



National-Level Enterprise Technology Center, National-Level Industrial Design Center

National Innovative Enterprise, National Manufacturing Single Champion Demonstration Enterprise

CNAS Accredited Testing and Inspection Center

/ Technology Innovation Ecosystem /

- With nearly 10 universities, including Hefei University of Technology, Anhui University and upstream/downstream enterprises, Heli has carried out over 60 industry-university-research projects.
- Heli lead the collaboration with University of Science and Technology of China, Shanghai Jiao Tong University and other organizations to established Anhui province's first intelligent industry innovation alliance and technical expert committee.

DEVELOPMENT HISTORY

Origins

Anhui Heli Logistics Technology Co., Ltd. was founded in 1999, deploying on automated high-bay warehouse, pioneering a new path in intelligent logistics.

HELI TECH

HELI TECH was established in 2016 and was officially operated in 2017, which accelerate the industrialization of intelligent logistics.

It has successively been awarded honorary titles such as National "High-Tech Enterprise", "Specialized, Sophisticated, Distinctive and Innovative SME" in Shanghai, "Little Giant" in Yangpu District.

HELI TECH was selected for "Sci-Tech Reform Demonstration Enterprise" by the SASAC in 2022.

Strategic Layout

National Union Fund invested YUFENG INTELLIGENT in 2021, which accelerate intelligence business expansion and full-category product matrix development.

Win-Win Cooperation

In 2024, HELI has completed the acquisition of YUFENG INTELLIGENT, building a complete puzzle of intelligent logistics full-stack solution.

In 2024, YUFENG INTELLIGENT was awarded National-level Specialized, Sophisticated, Distinctive and Innovative 'Little Giant' Enterprises and "Sci-Tech Reform Demonstration Enterprise" by the SASAC.

Embarking on a New Leap

In 2026, HELI YUFENG aims to achieve "China's Leading, World-Class Excellence", with global footprint as our anchor, building intelligent logistics to new heights during the 15th Five-Year Plan period and enabling next-generation intelligent logistics empowers diverse industries.

HELI intelligent logistics was included in the provincial SASAC's strategic cultivation section.

Solidify Technology Base

In 2014, HELI established the Intelligent Logistics Industry Innovation Institute. In 2021, it was renamed HELI intelligent logistics and industrial Internet research institute, specializing in full-scenario applications of unmanned forklifts (AGVs), building electromechanical software platforms, and conducting full-stack independently R&D and manufacturing.

In 2016, HELI and Kollmorgen which is global AGV technology leader have established the first strategic partnership in the industrial vehicle.

YUFENG INTELLIGENT

In 2018, Anhui Yufeng intelligent Technology Co., Ltd. was established, deploying on intelligent high-bay warehouse, intelligent mobile robot and AGV body.

The Robotics R&D Center and Smart Logistics Research Institute were established simultaneously in 2019.

In 2023, YUFENG INTELLIGENT was awarded the certification of National "High-Tech Enterprise".

ZHIXING TECH

Anhui Jianghuai Zhixing Technology Co., Ltd. operated simulation company in 2023 which focus on automotive industry, developing a comprehensive factory handling solution.

HELI YUFENG

HELI YUFENG as a new brand is derived from the Integration of "One Institute and Three Companies" including HELI INTELLIGENT INSTITUTE, YUFENG INTELLIGENT, HELI TECH, ZHIXING TECH in 2025, with AI logistics robots and system integration as dual core businesses, HELI YUFENG jointly embarks on a new chapter in intelligent logistics.

It has developed in in-depth collaboration with HUAWEI and JAC Innovation Center to build TIANGONG Laboratory and TIANSHU Laboratory, which engage in some specialized fields such as embodied intelligence and smart logistics parks. It is approved for a Provincial Postdoctoral Research Station and win the First Prize for Scientific and Technological Progress in the Professional (Discipline) Category of the Anhui Provincial Science and Technology Award.

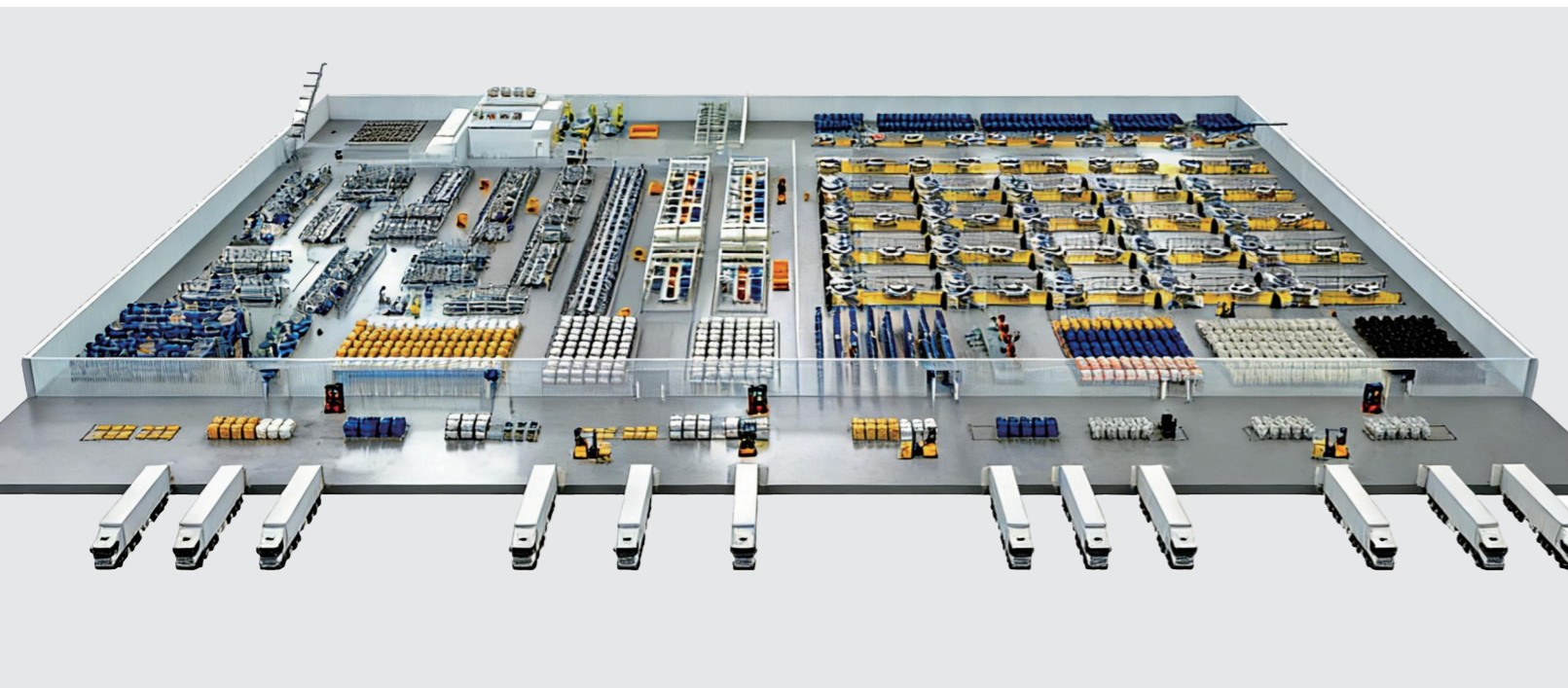


BUSINESS LAYOUT

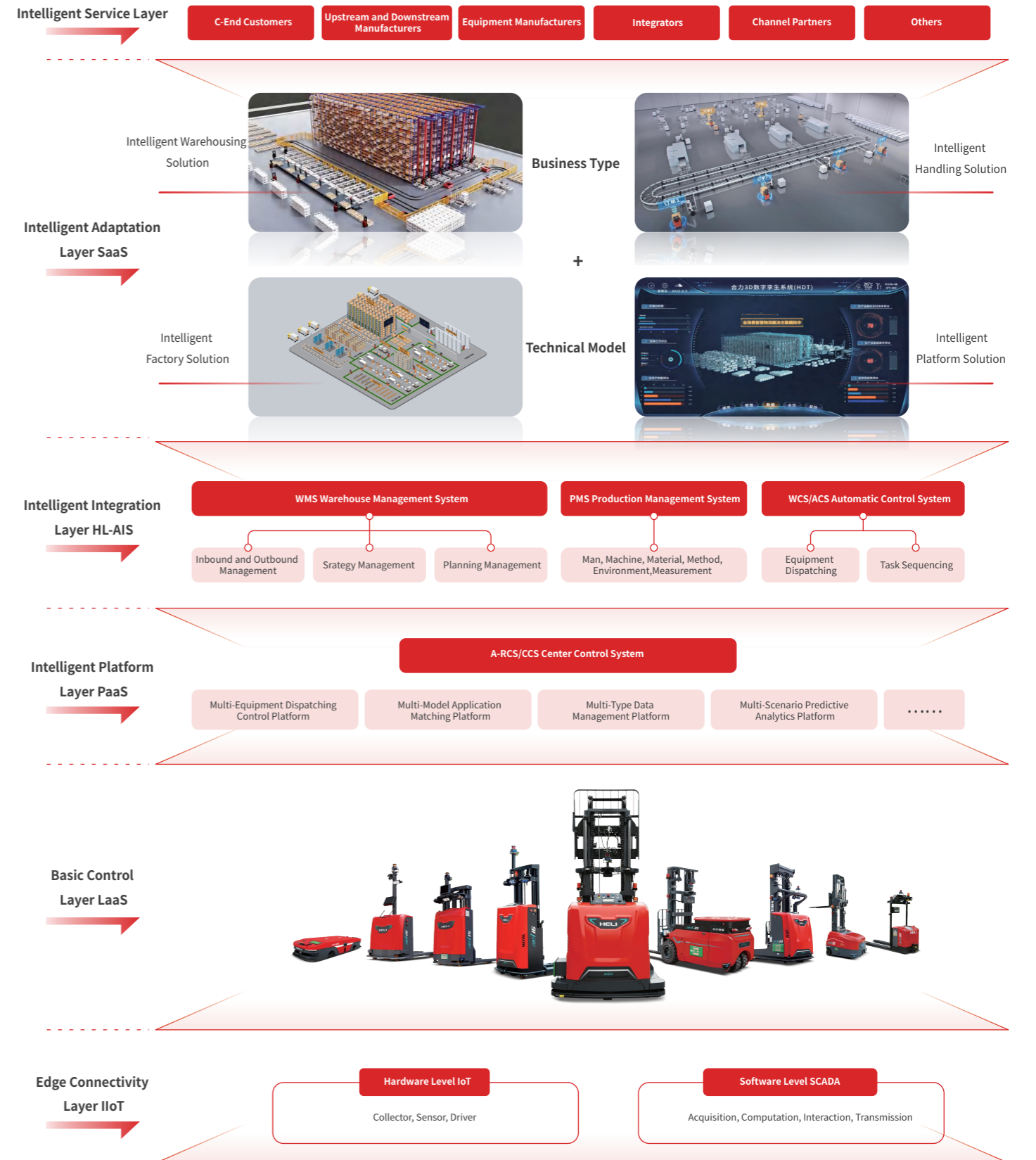
Core Business

- Project Consulting Services**
 Industry Analysis, Planning & Design, Logistics Solution Delivery...
- Intelligent Logistics Products**
 Warehousing Robots, Mobile Robots, Intelligent Software Systems...
- Intelligent System Platform**
 WMS, WCS/ACS, A-RCS/CCS, HDT HELI Digital Twins, Integrated Intelligent Management and Control Platform...

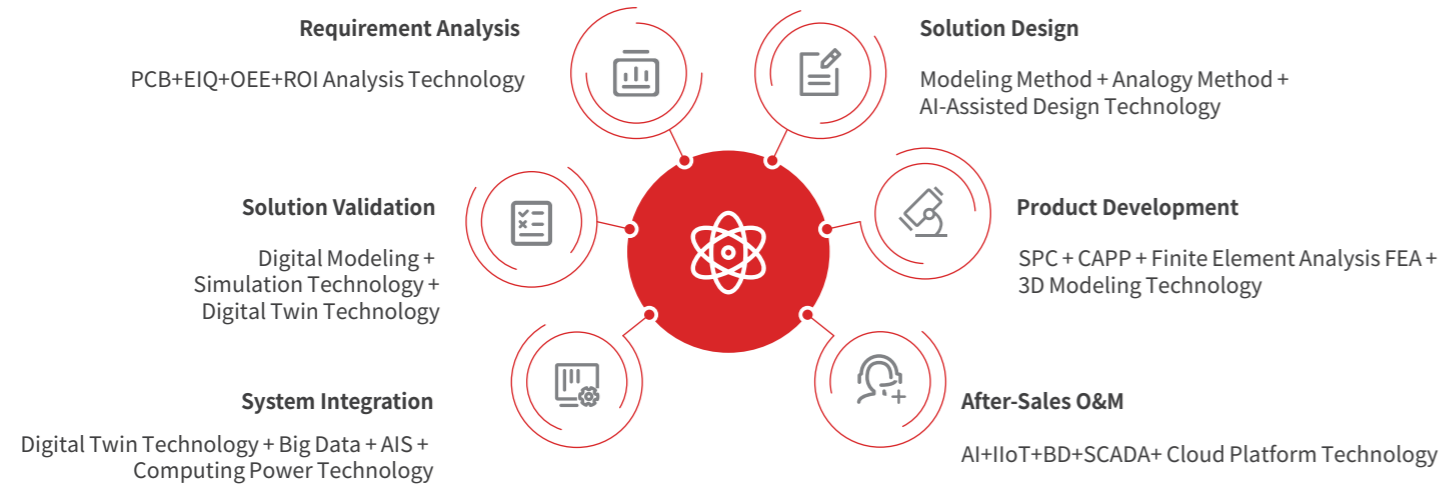
- Full-Stack Solution**
 Intelligent Warehousing, Intelligent Handling, Intelligent Factory, Intelligent Park...
- Project System Integration**
 Mature System Integration Solution System Docking and Application Customization Development...
- After-Sales O&M Services**
 Regular Inspections, Technical Training, Equipment Maintenance, System Optimization...



Intelligent Logistics Blueprint



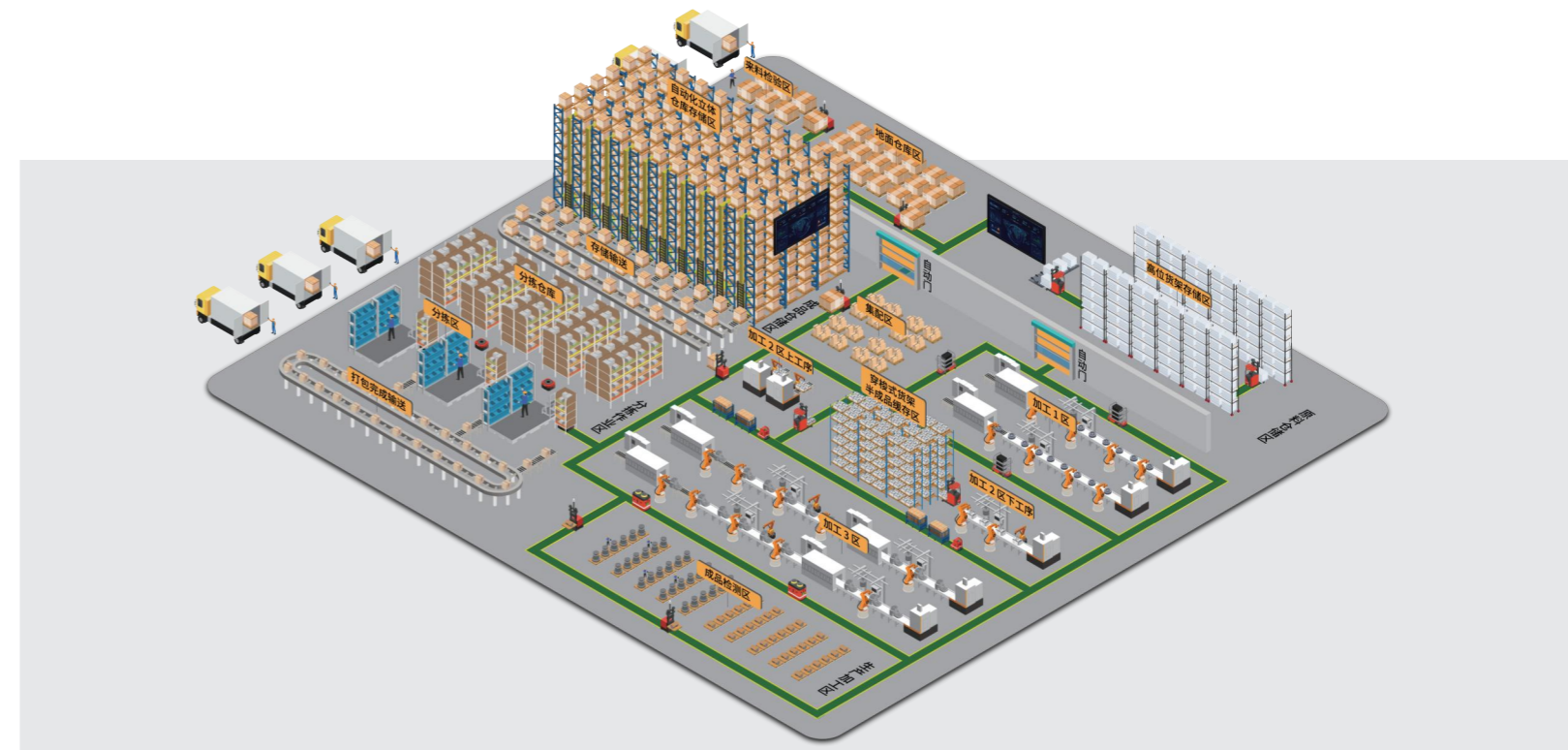
Core Technology



Service Content



Full-Cycle Comprehensive Services



INTELLIGENT PRODUCT



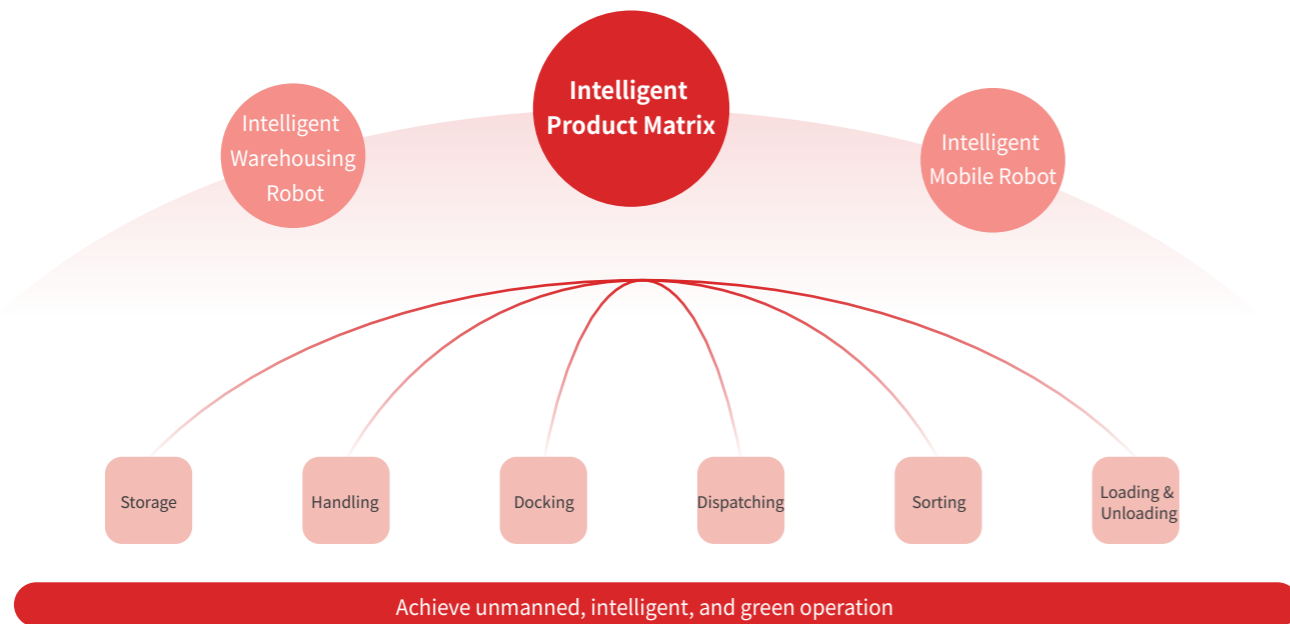
Intelligent Warehousing Robots

HELI YUFENG's intelligent warehousing robots includes stacker crane, pallet four-way shuttle, carton shuttle, RGV and shuttle box and realize unmanned and intelligent operations such as storage, docking, dispatching and sorting of materials.



Intelligent Mobile Robots

HELI YUFENG's intelligent mobile robots includes various types of forklift AGVs, latent mobile AGVs and composite AGVs and realize unmanned, flexible and intelligent operations such as storage, handling, docking, dispatching, sorting, picking and loading & unloading of materials.



INTELLIGENT SOLUTION

Full-Scenario Intelligent Logistics Full-Stack Solution Service Provider

Driven by “AI logistics robotics”, HELI YUFENG empowers enterprises to achieve “digital and intelligent transformation & upgrading, cultivation of new quality productive forces, and efficient operations with cost reduction”. HELI YUFENG also provide high-efficiency implementation services of full-stack solution for intelligent warehousing, intelligent handling, intelligent factories, and intelligent parks which have a deep understanding of real-world needs and application scenarios.



Intelligent Warehousing Solution

Develop “multi-format, multi-industry and multi-model” intelligent warehousing solution.

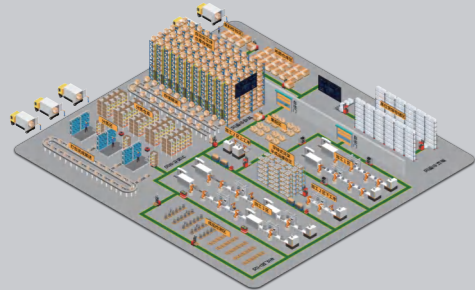
Intelligent Handling Solution

Provide intelligent handling solution featuring high efficiency, precision and collaboration.



Intelligent Factory Solution

Develop intelligent factory solution that achieves “efficient, high-quality and high-level”, human, machine and material synergy across full process, full scenarios and all elements.



Intelligent Park Solution

It provides comprehensive intelligent management and systematic services for intelligent park solution, based on advanced technologies such as AI, big data, IoT, and cloud computing.



INTELLIGENT SYSTEM

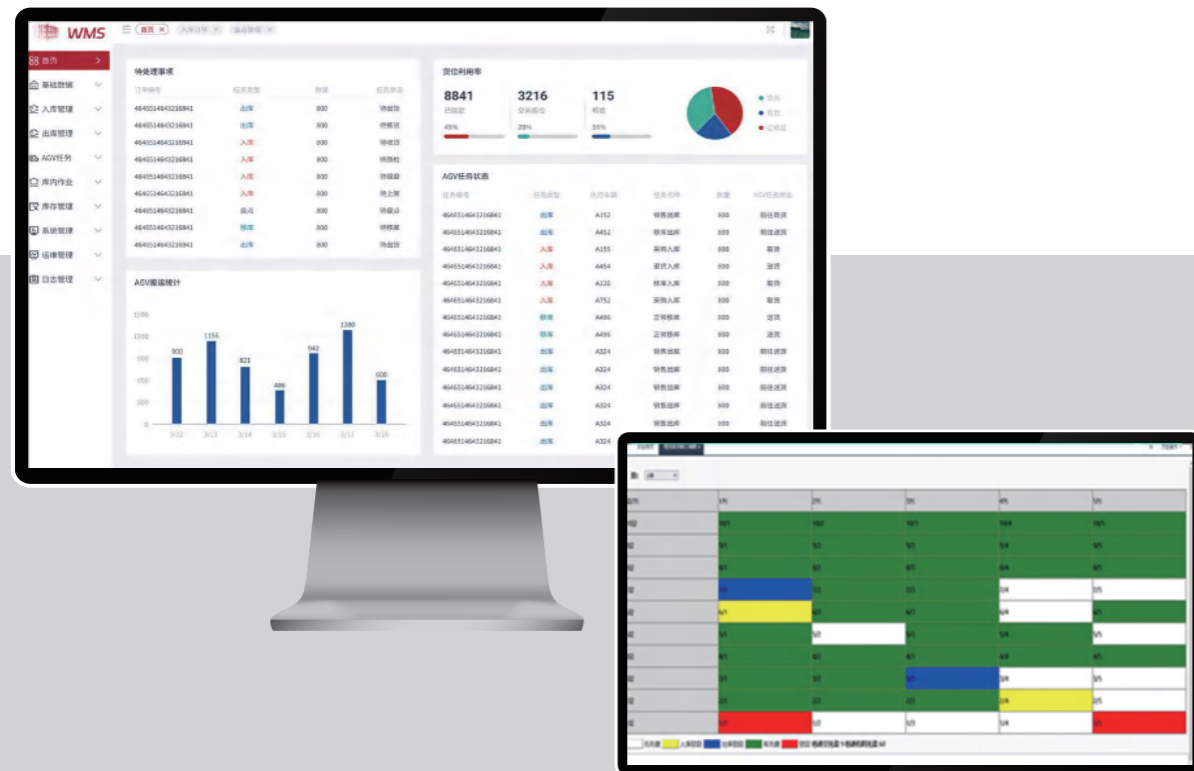
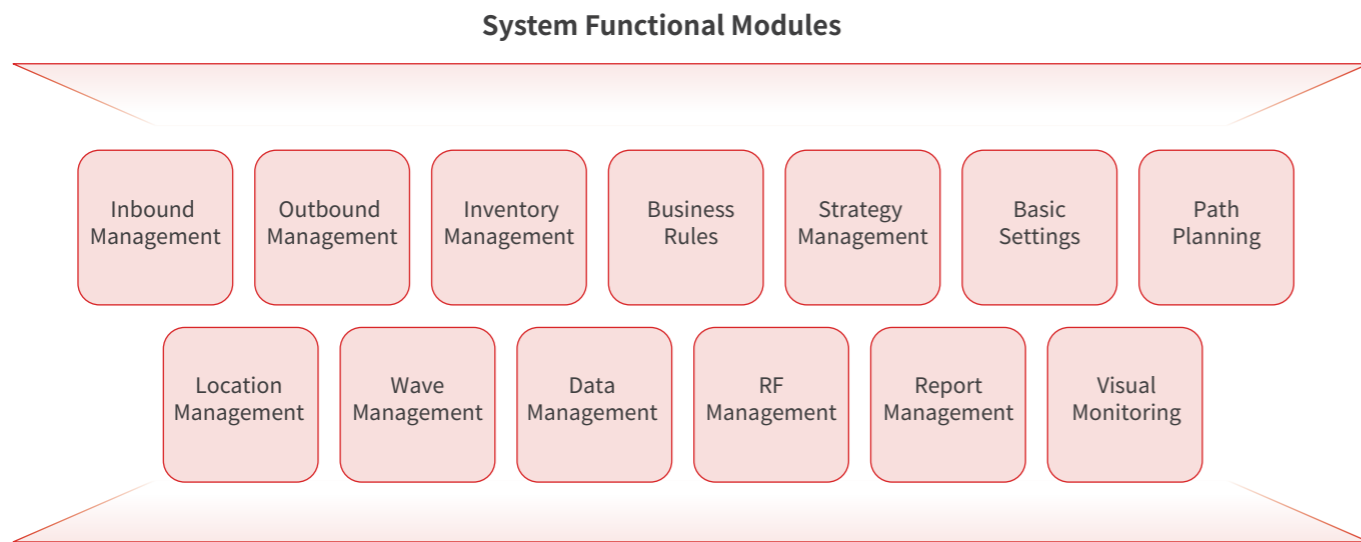
Self-Developed Software System Atlas: Customizable + Process-Oriented + Scenario-Based + Platform-Centric

HELI YUFENG adopts “standard, modular, user-friendly and integrable” design idea and meet the system requirements of “multi-strategy, multi-rule and multi-format”. While it features “customizable multi-adaptation, flexible deployment and secondary customization & development”, with user-friendly operation, enabling accurate and efficient real-time system data updates.



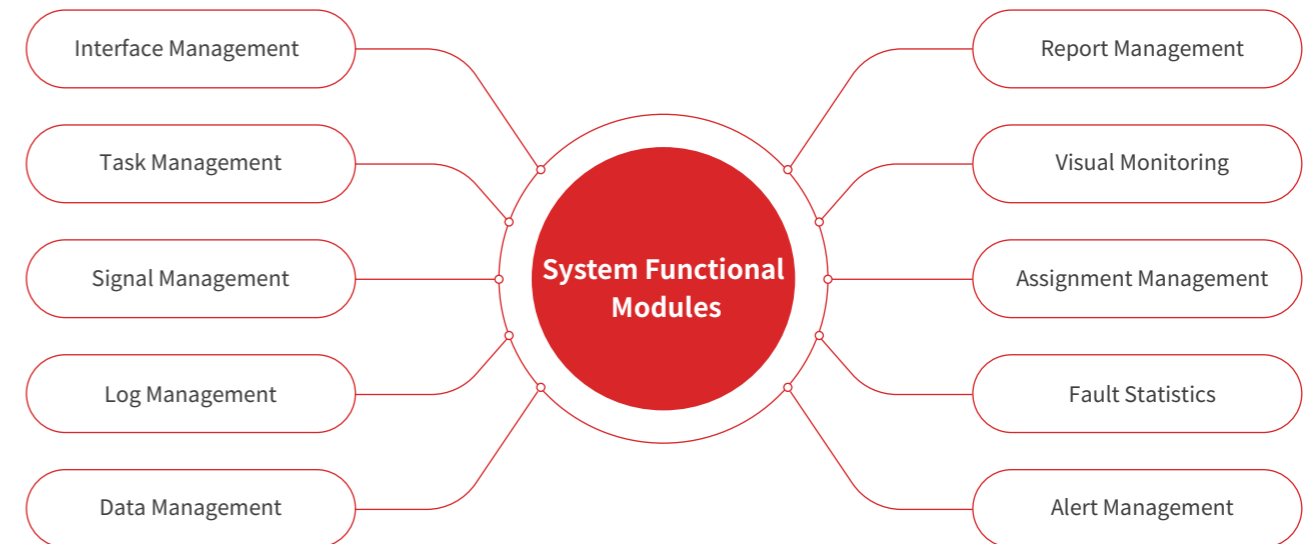
/ WMS Warehouse Management System /

HELI YUFENG has developed warehouse management system which enables inbound/outbound management, inventory counting management, put-away and retrieval strategy management, and dynamic inventory management, supporting cloud-based interconnected management across multiple owners, multiple warehouses, and multiple zones, with real-time visual monitoring of panoramic inventory changes.



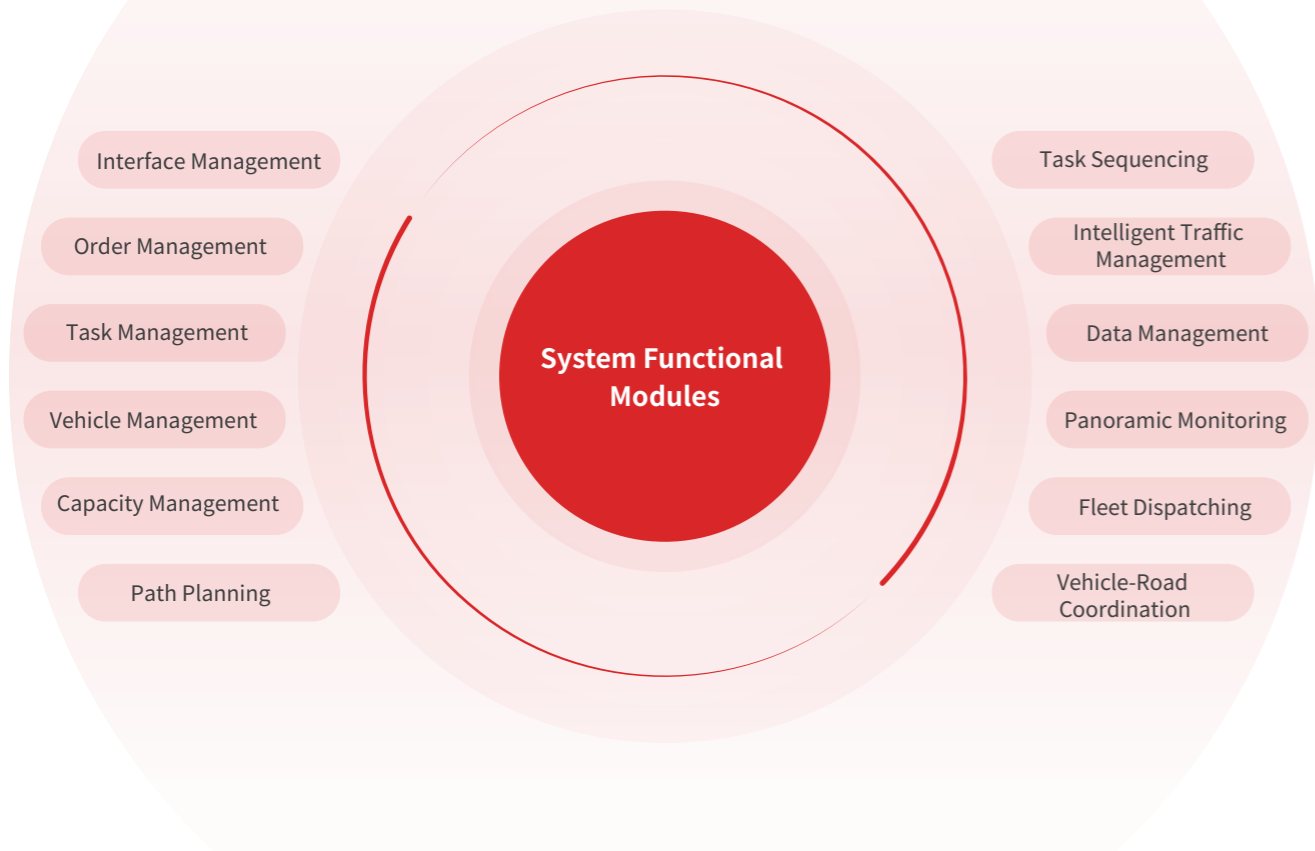
/ WCS/ACS Automatic Control System /

HELI YUFENG has developed automatic control system which enables unified system management of mobile robots and interfacing equipment such as elevators, hoisters, conveyors, manipulators, shuttles, automatic doors, and air showers, while realizing visual monitoring operation and management of equipment data flow and information flow.



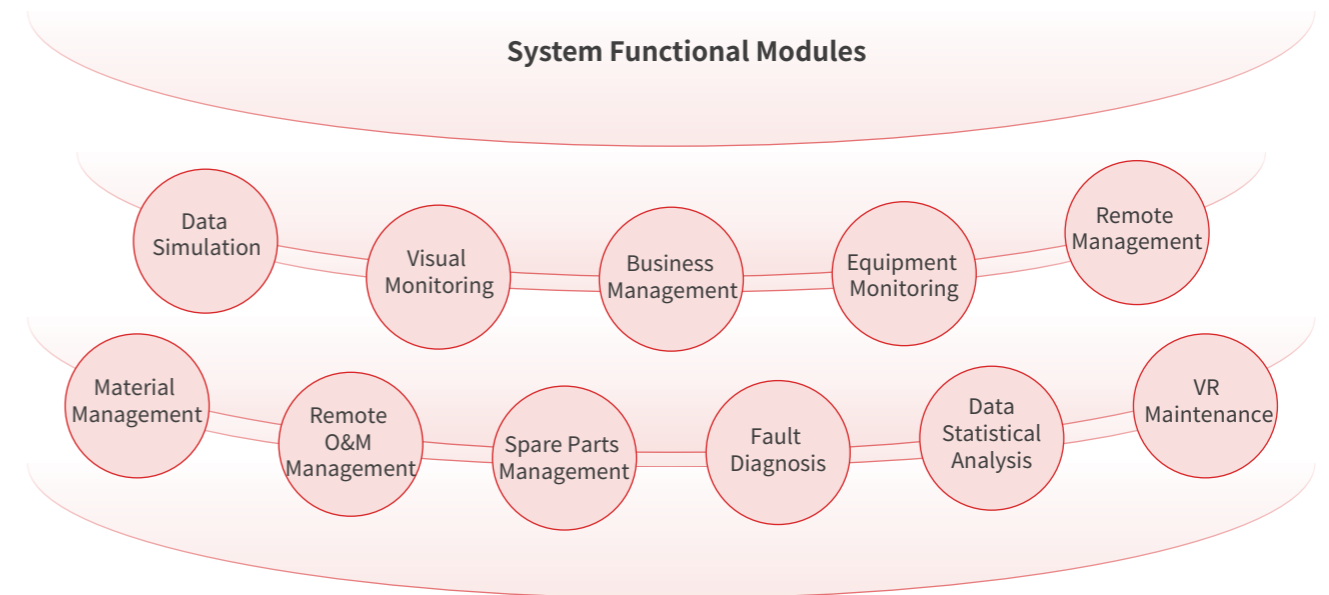
/ A-RCS/CCS Center Control System for Next-Gen Mobile Robots /

HELI YUFENG has developed center control system for Next-Gen mobile robots which enables collaborative, parallel, and agile operations of multiple vehicle types in batches within a unified workspace. It supports rapid deployment, rapid allocation of the capacity pool, globally optimized path planning, and efficient implementation of multi-task across full-process and full scenarios.

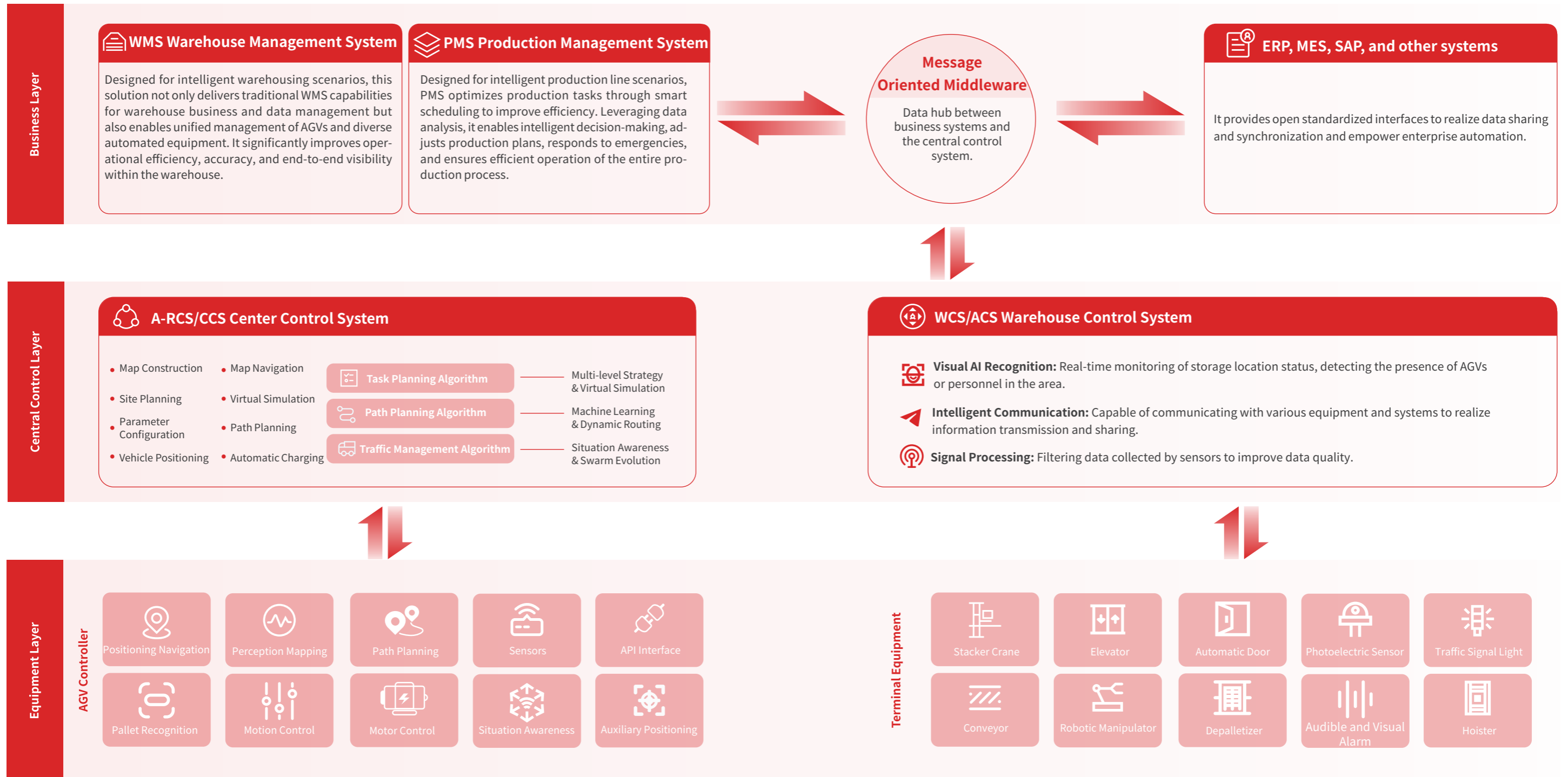


/ HDT HELI Digital Twins /

HELI YUFENG has developed HELI Digital Twins which enables real-time 3D visualization for full-scenario real-virtual mapping management such as data simulation, visual monitoring, business management, equipment monitoring, remote management, material & spare parts management, remote O&M management, data statistical analysis, fault diagnosis and maintenance management.



INTELLIGENT PLATFORM



SMART SERVICE

Efficient Implementation and Delivery Service Standards



Delivery Process

The overall project construction phase is divided into: initiation, execution, acceptance. Quality control is divided into: pre-quality, in-quality, and post-quality, etc.



Delivery Strategy

Efficient delivery, integrated mechanical, electrical, software, and platform (Four-in-One), simulated process, real-scenario test, immersive integration test and operation plans, etc.



Scenario Debugging

Based on construction schedule, factory entry conditions, installation process, installation acceptance, hardware debugging, software debugging, and integrated hardware-software debugging.



Process Acceptance

Implement plans in accordance with the requirements of the technical agreement, acceptance standards, training delivery and acceptance processes.



On-site Service

Routine inspection, regular maintenance, monthly evaluation, on-site targeted training, spare parts management.

24/7 Responsive After-Sales Service



24/7 Accompanying Service

Provide 24-hour full-time accompanying service, quickly respond to, record and track requests for on-site project operation issues, handle and track them efficiently, correctly and safely, and feed back to the corresponding department contacts in real time for timely resolution.



Rapid On-site Service

Build localized after-sales service points and partners to quickly reach the customer's site for on-site maintenance of logistics equipment and supporting equipment (automatic door, charging station, etc.), solve problems quickly and ensure the customer's production.



Regular Inspection Service

The after-sales service department will conduct inspections of mechanical, electrical control, software and other problem points at the customer's site according to weekly, monthly, quarterly and annual time nodes to prevent and solve problems in advance.



Spare Parts Steward Service

Provide commonly used vulnerable parts of logistics equipment, regularly count the customer's spare parts inventory, update the inventory promptly, and dynamically replenish goods to ensure the normal operation of the customer's site.



Full-cycle System Optimization Service

According to the customer's business development, we can continuously iterate, upgrade and optimize the customer's various software systems, and flexibly solve the customer's on-site operation problems.

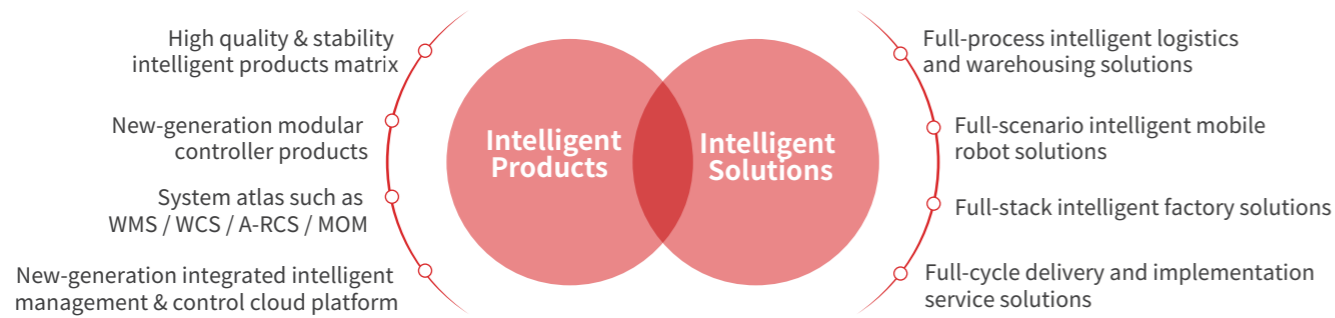


Remote Visual O&M Service

Establish a remote operation and maintenance service platform to remotely monitor the operational status of vehicles on the project site, enable early warning of hidden dangers, remotely resolve faults, and provide training, guidance and other related services.

VALUE ADVANTAGE

Empowering Various Industries With The New-Generation Intelligent Management & Control Platform



Intelligent Platform

New-generation integrated intelligent management and control cloud platform



100%
Implementation

100%
Delivery

100%
Benchmark

Build A Highly Competitive Value Advantage Across Full-industries

Product Dimension Product

- Heli's advanced manufacturing, with over sixty years of technological heritage
- Innovative combination model of digital modularization, integrated control and protocol design
- Quality assurance with high stability & cost-effectiveness

Solution Dimension Solution

- Full-process, full-scenario, full-element solution design concept
- Holistic design from a higher perspective, including supply chain, full-facility, and warehouse-distribution integration
- Implementation-oriented thinking for design guidance with flexibility, collaboration, and delivery excellent

System Dimension System

- Creating dynamic modeling methods for scenarios, business, and graphical analysis
- Build an intelligent scheduling cloud platform with data, model and computing power
- Support custom adaptation requirements of multi-strategy, multi-level and multi-mode

Service Dimension Service

- Adhere to the full-cycle reliability service concept
- Build a full-stack responsive benchmark lifelong service tenet
- Based on Heli's global service network and team, create localized service coverage

COLLABORATION CASES

／ Cold Chain Industry ／ One of the Largest Intelligent Cold Storage projects in China



Project Requirements

With total 6 warehouse zones and 24 meters height, an intelligent warehousing center covers ambient and cold chain, featuring high throughput and high storage density

Throughput demand exceeds 360 pallets per hour for inbound and outbound operations, and 20,000 orders per hour for sorting, while maintaining stable operation at -25°C



It is required to achieve multi-floor coordination and flexible collaboration across packaging, restocking, and e-commerce business

Solutions

Construct an ASRS with over 50,000 storage locations, equipped with 25 stacker cranes, RGVs, WMS, and WCS/ACS system

Establish a conveyor and sorting system spanning all floors



Design a dual-layer cross-belt sorter on the first floor, complemented by multiple spiral chutes and dedicated express lines to ensure efficient peak-hour processing

The third floor enables multi-temperature zone coordination, featuring cold storage anterooms and picking areas

The second and fourth floors are reserved as expansion zones to enhance sustainability

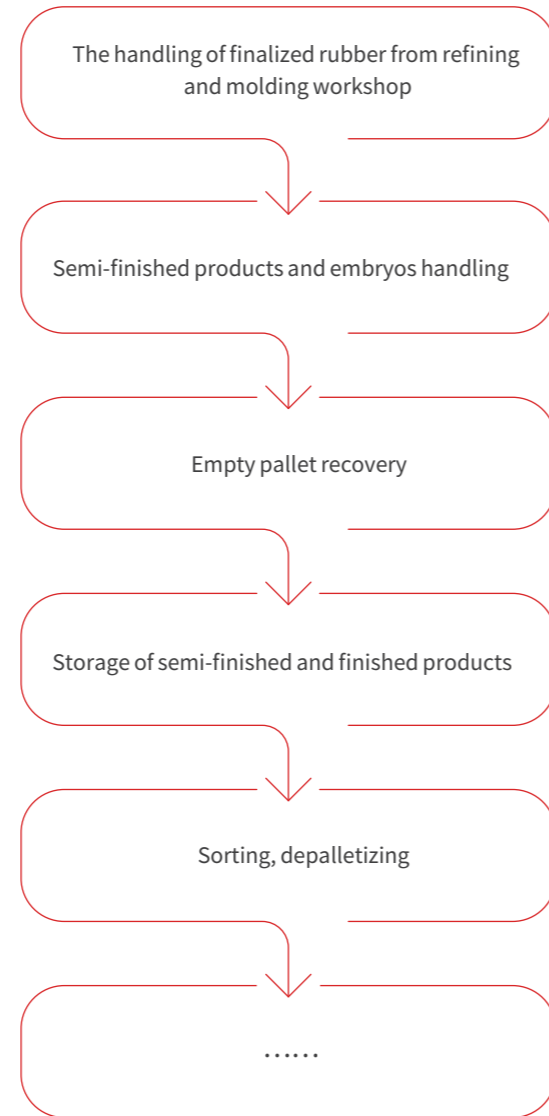
Project Value



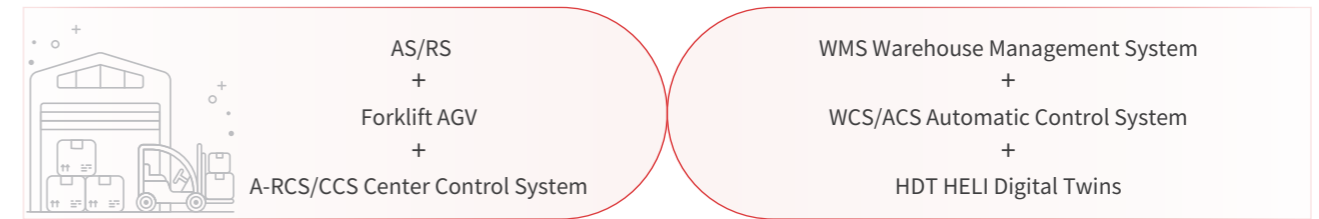
/ Tire Industry / National Benchmark Demonstration Project



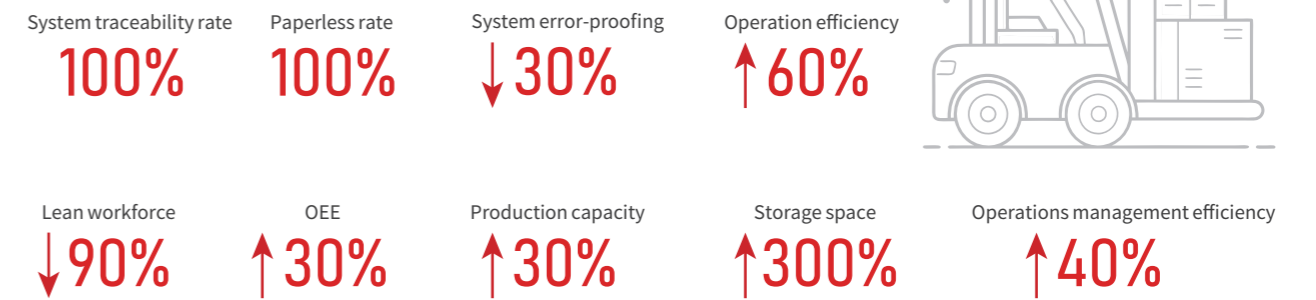
Project Requirements



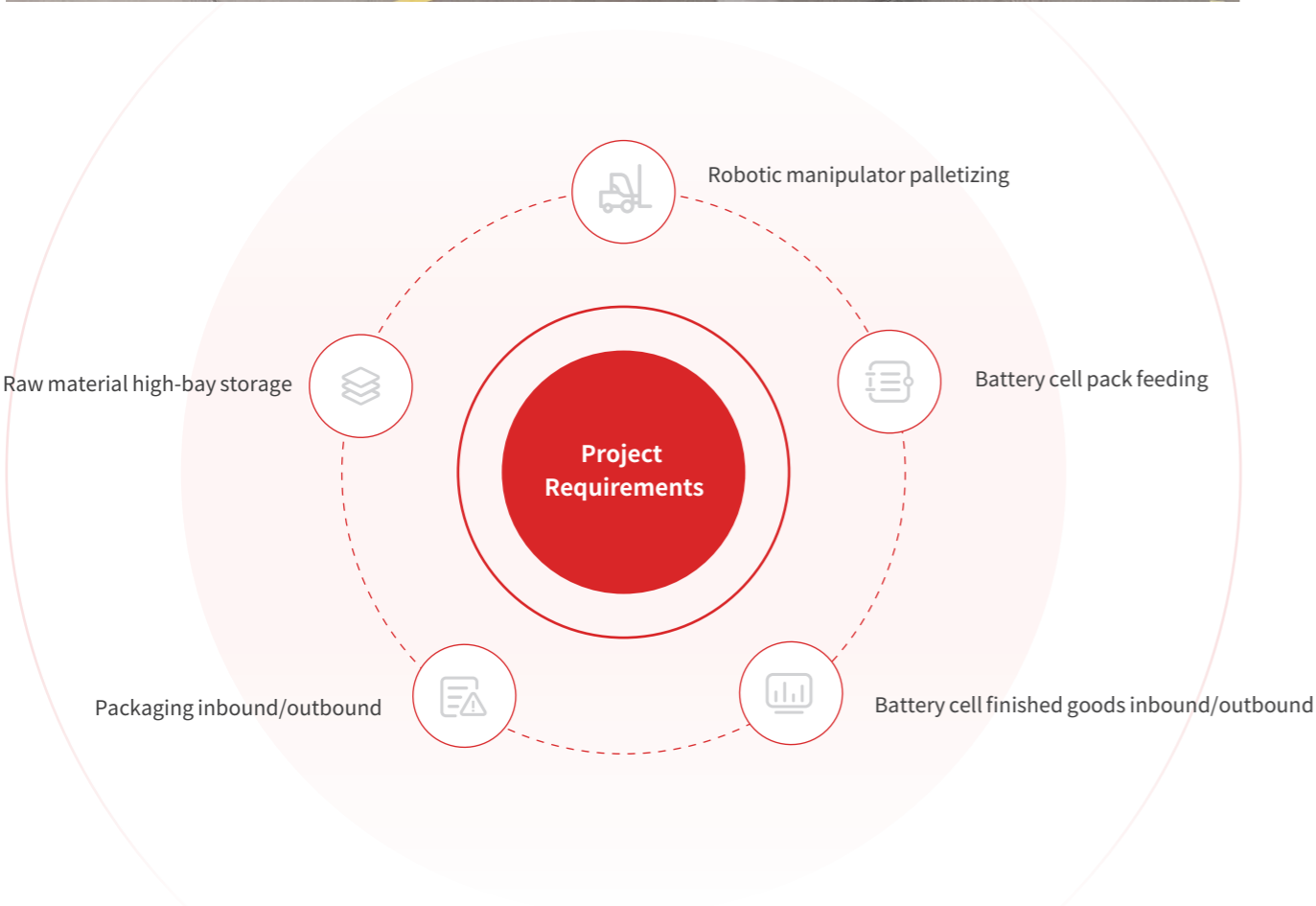
Solutions



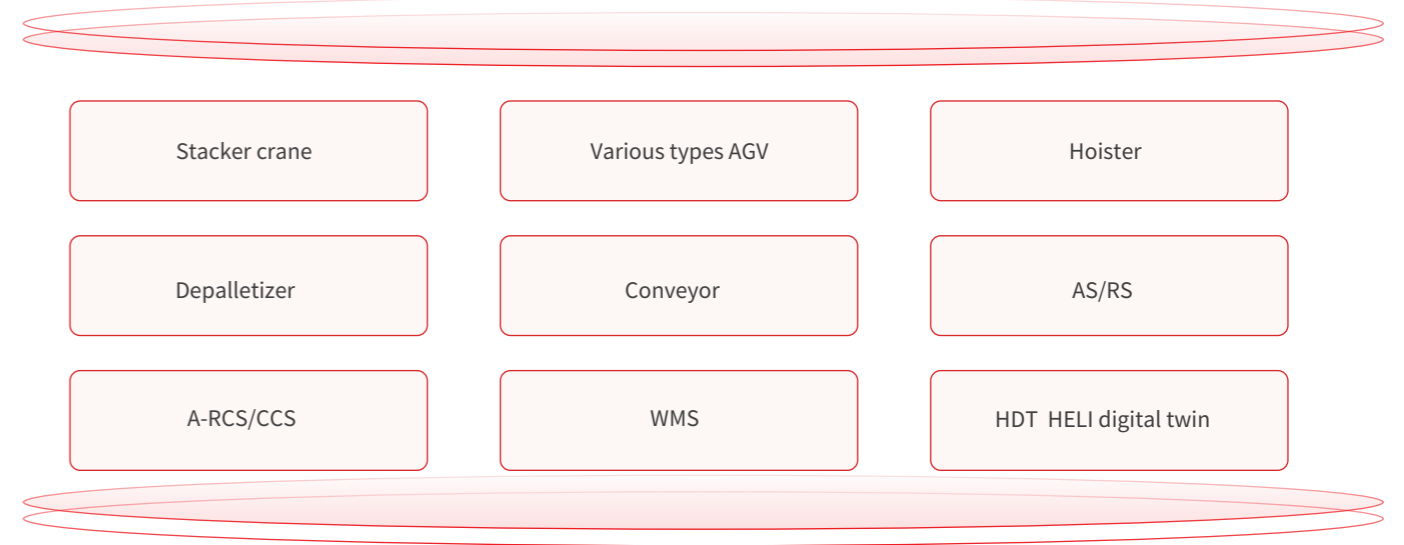
Project Value



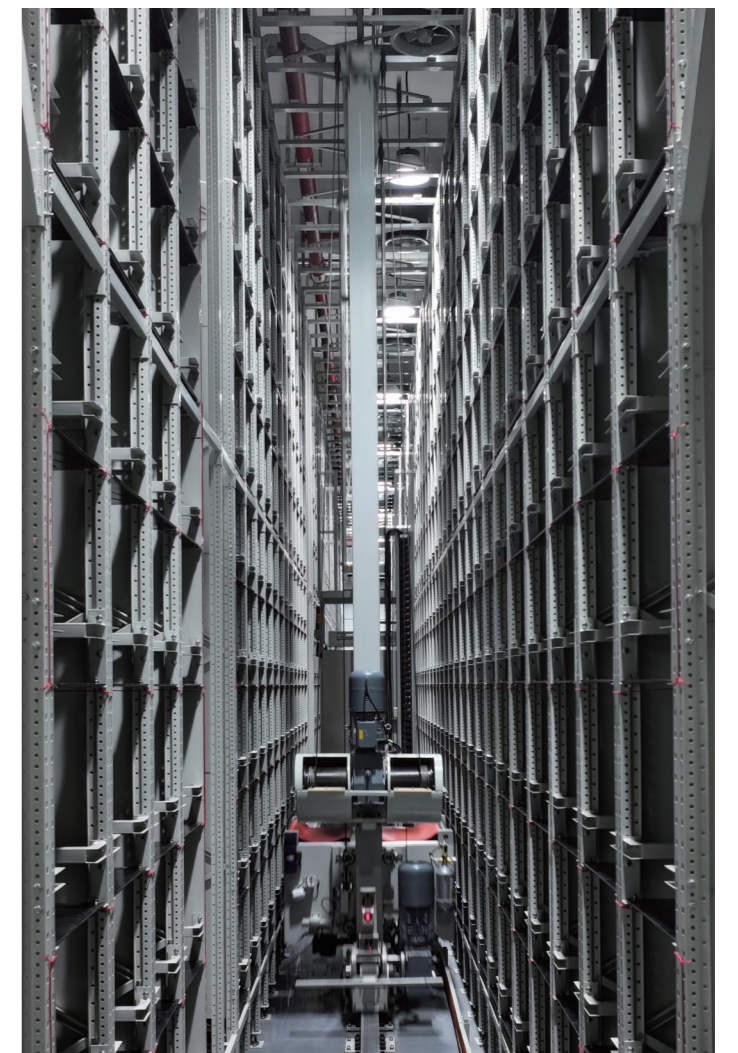
New Energy Industry / Excellence-level Intelligent Factory Project



Solutions

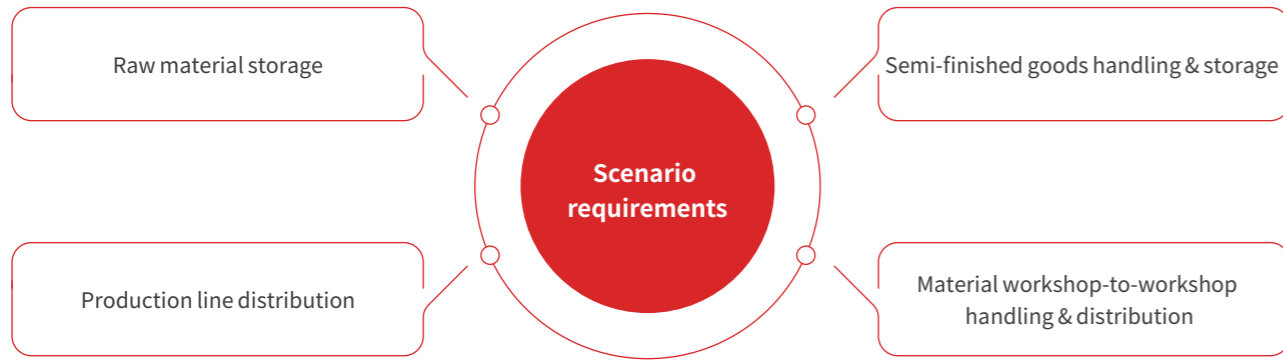


Project Value



Auto Parts Industry / Benchmark Demonstration Project

Project Requirements

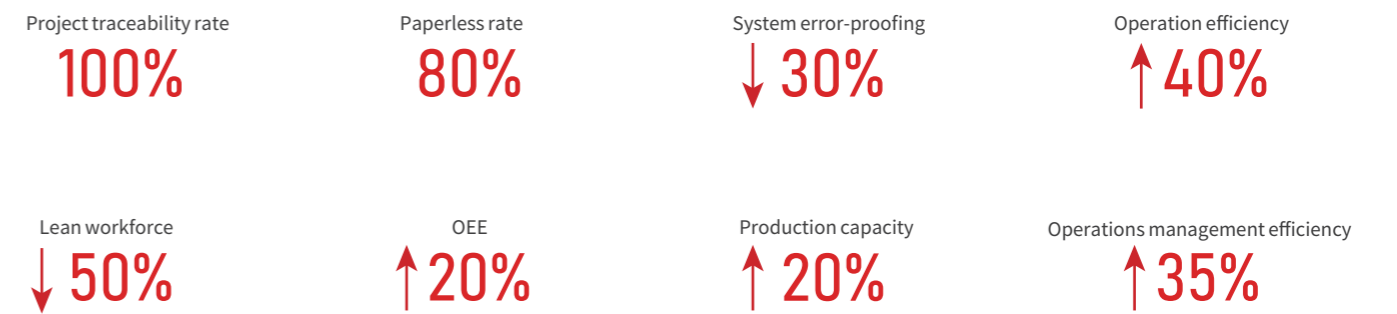


Solutions

AS/RS, Various types AGV, A-RCS/CCS, AI vision-based bin management, WMS, among others.

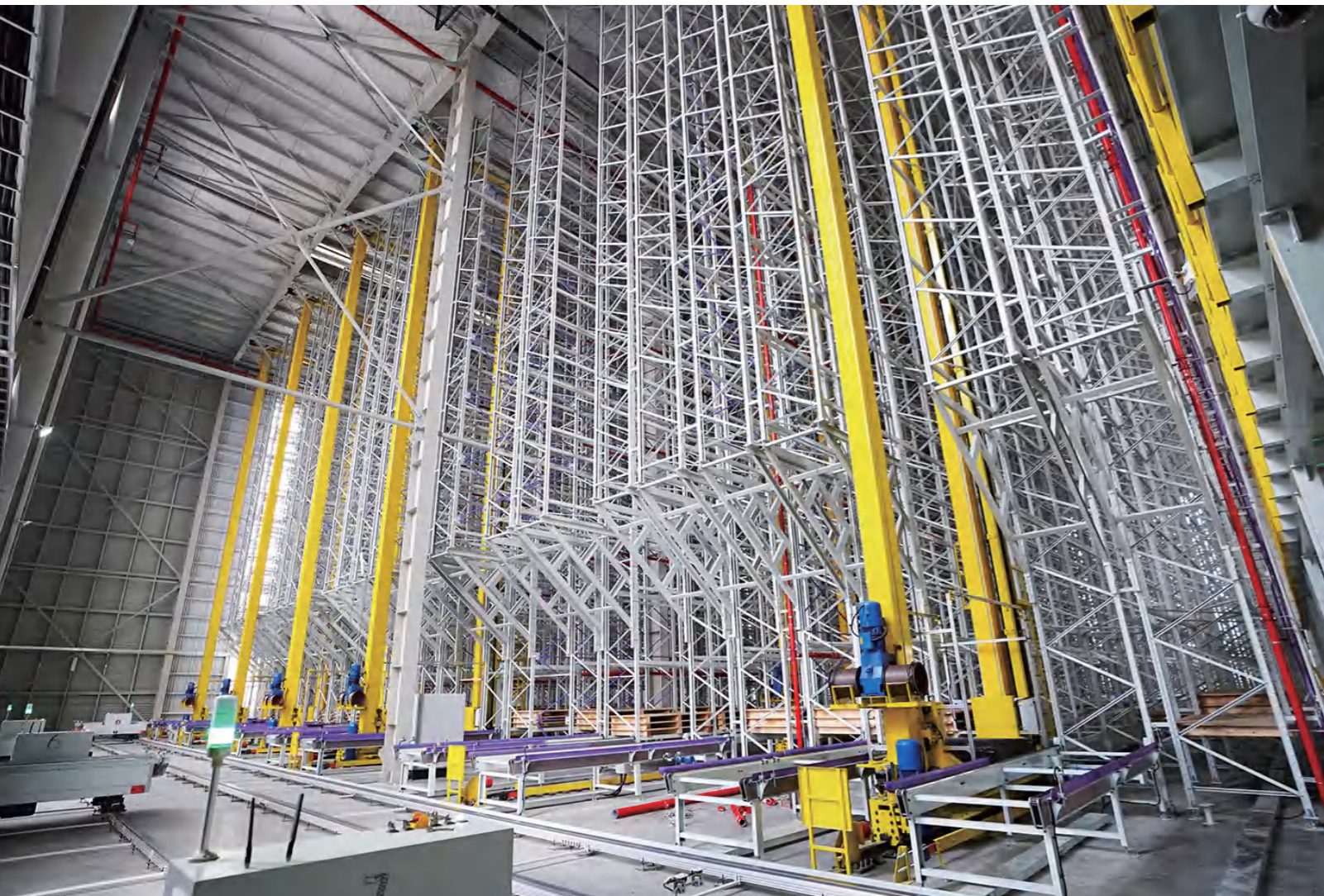
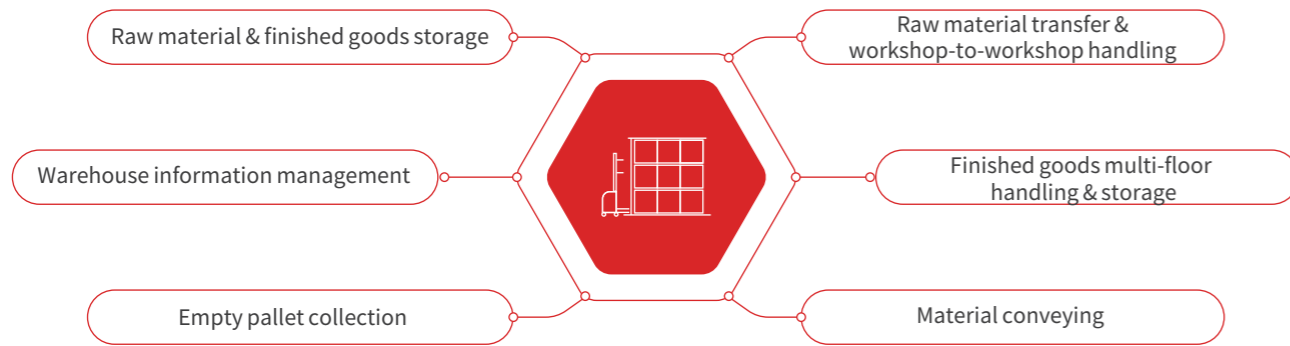


Project Value



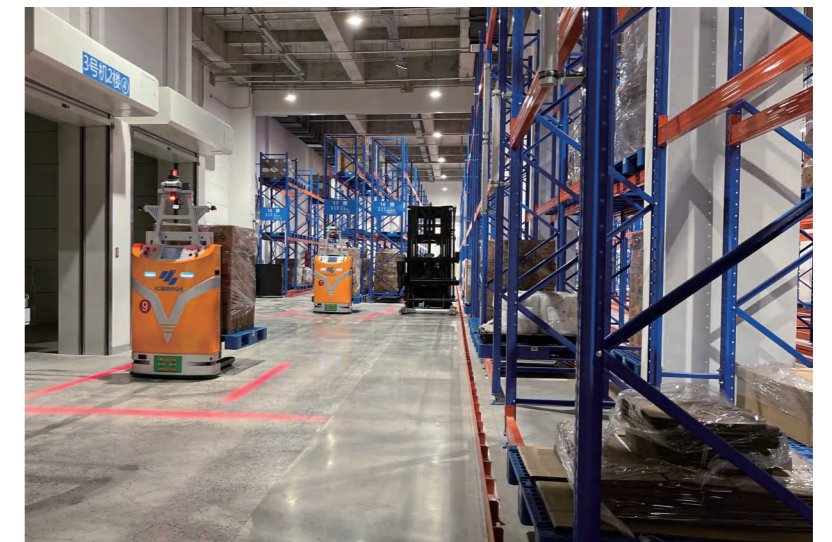
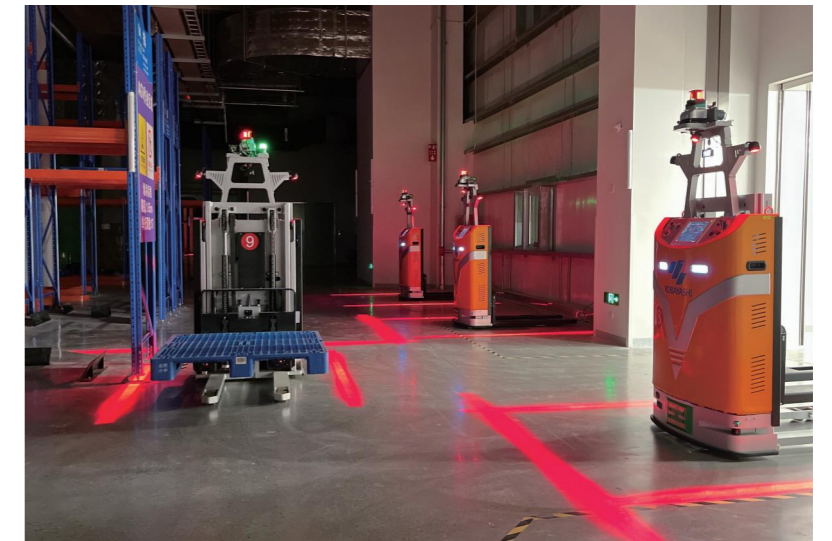
/ FMCG Industry / Integrated Warehousing & Distribution Demonstration Project

Project Requirements



Solution

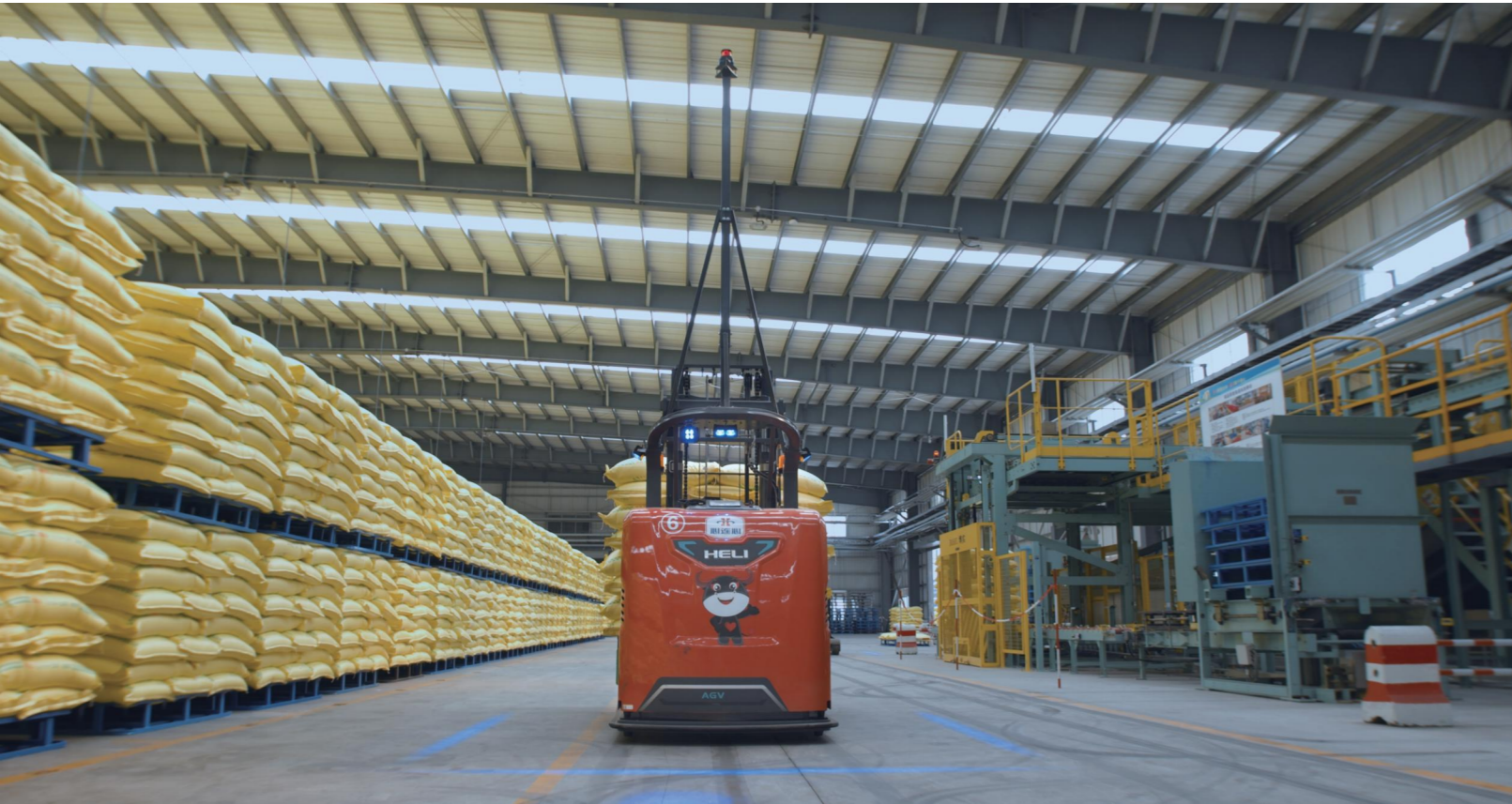
- AS/RS
- +
- AGV
- +
- RGV
- +
- A-RCS/CCS
- +
- WMS
- +
- WCS/ACS
- +
- HDT HELI digital twin



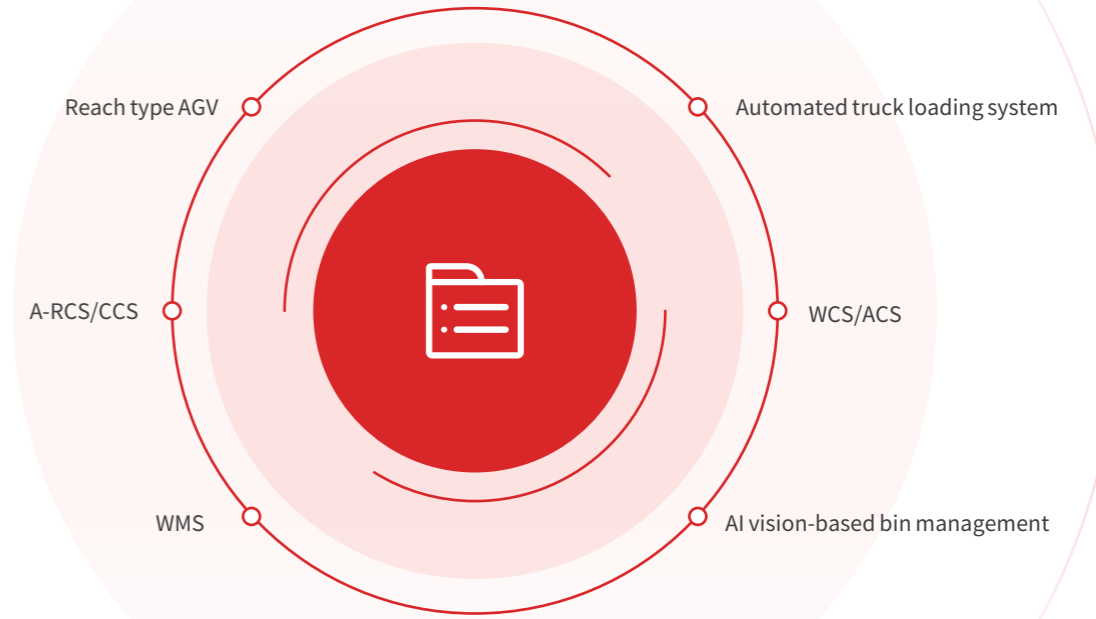
Project Value

System traceability rate 100%	Paperless rate 95%	System error-proofing ↓ 50%	Operation efficiency ↑ 45%
Lean workforce ↓ 80%	OEE ↑ 40%	Production capacity ↑ 40%	Operations management efficiency ↑ 45%

Chemical Industry / National Benchmark Demonstration Project



Solutions



Project Value

System traceability rate	Paperless rate	System error-proofing	Operation efficiency
100%	80%	↓ 30%	↑ 40%
Lean workforce	OEE	Production capacity	Operations management efficiency
↓ 50%	↑ 20%	↑ 20%	↑ 35%

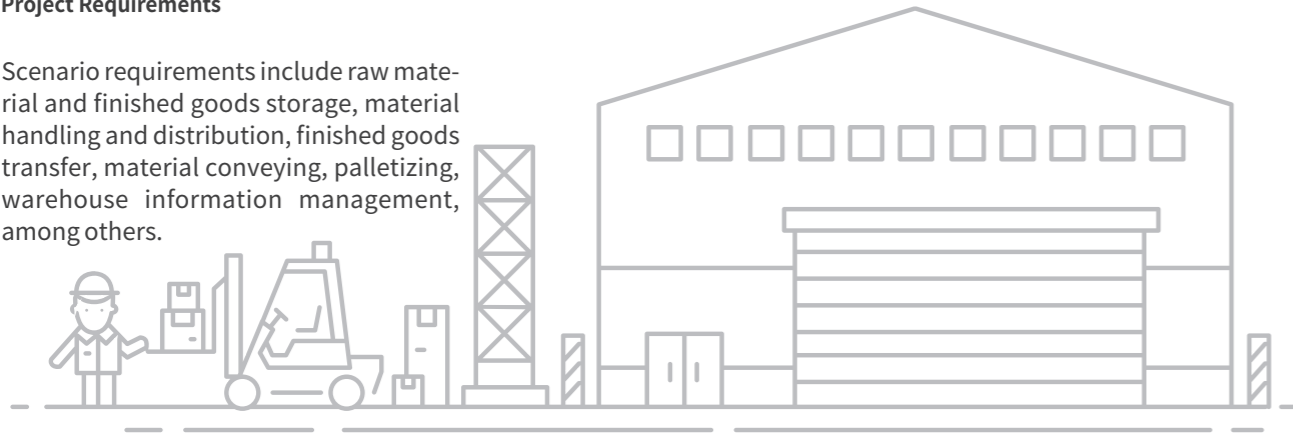
Project Requirements



Pharmaceutical Industry / Benchmark Demonstration Project

Project Requirements

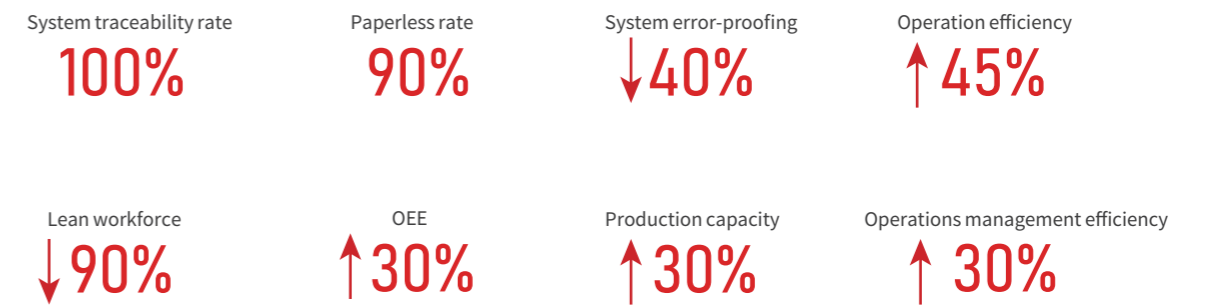
Scenario requirements include raw material and finished goods storage, material handling and distribution, finished goods transfer, material conveying, palletizing, warehouse information management, among others.



Solutions

AS/RS, AGV, robotic manipulator, A-RCS/CCS, WMS, WCS/ACS, HDT HELI digital twin , among others.

Project Value



Metallurgical Industry / National Demonstration Project



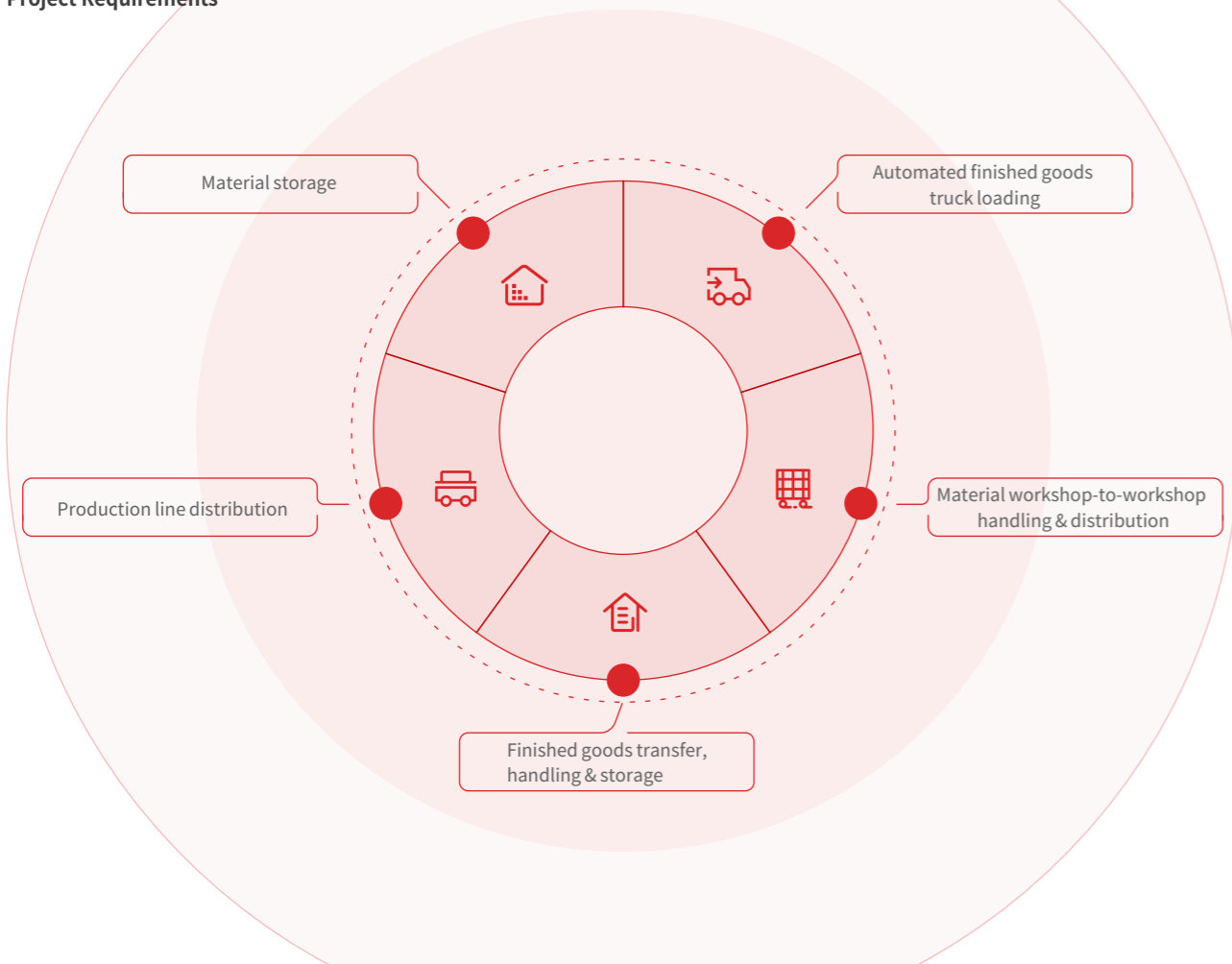
Solutions



Project Value

System traceability rate 100%	Paperless rate 90%	System error-proofing ↓ 50%	Operation efficiency ↑ 60%
Lean workforce ↓ 50%	OEE ↑ 25%	Production capacity ↑ 25%	Operations management efficiency ↑ 40%

Project Requirements



COOPERATIVE CLIENTS

